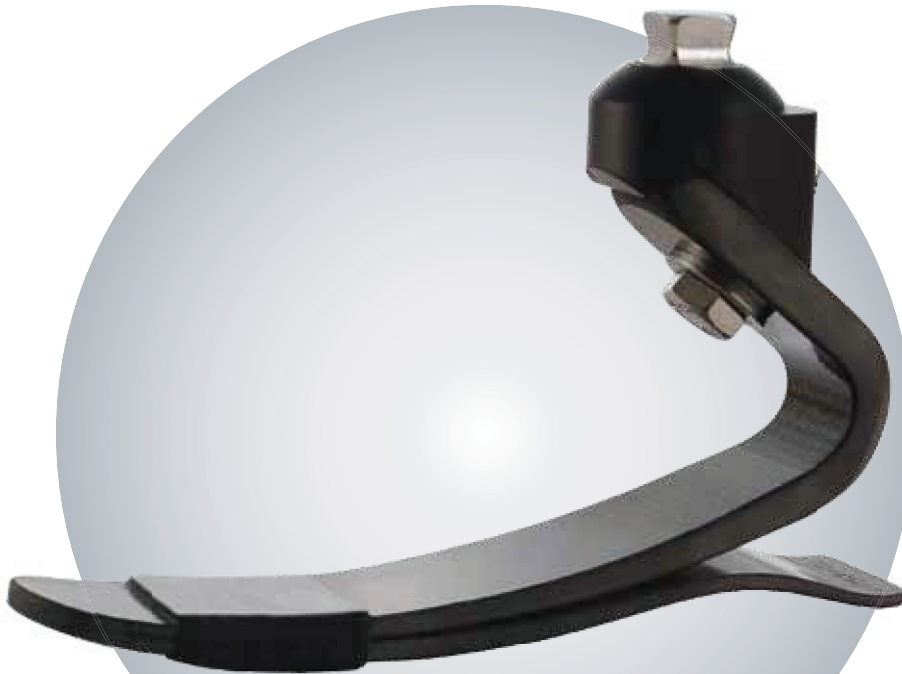


EVERYDAY

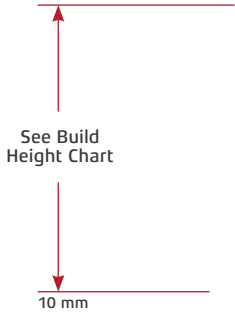
Senator[®]

Sophisticated simplicity at an affordable price

- Lightweight, energy-return design facilitates smooth, easy stride and durability
- Foot is not pre-bonded to foot shell, simplifying the use of heel wedges to improve alignment
- Simulated ankle motion provides a stable base of support throughout the stance phase
- Six stiffness categories enhance customization to ensure ultimate comfort and stability
- Ideal for low to moderately active amputees weighing up to 136 kg
- 24-month warranty



Senator (VS1)



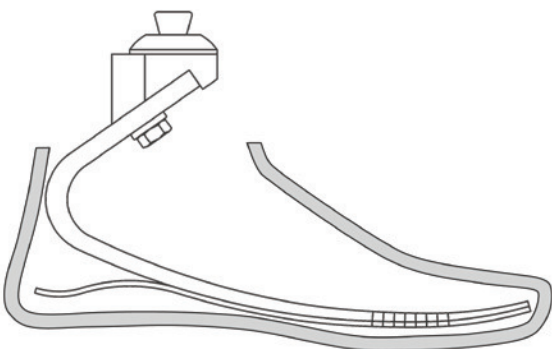
Note: Build height measurements represent a fully assembled unit.

- Product ID: (VS1)
- Sizes: 22-31 cm
- User Weight Rating: 136 kg
- Heel Height: 10 mm
- Connector: Male pyramid
- Warranty: Foot module 24 months, Cosmetic foot shell 6 months

Accessories

- Foot Shell Removal Tool: (ACC-00-103)
- Spectra Sock: (ACC-00-101xx)
30 cm, 35 cm, 40 cm
- Stiffening Bumpers:
 - 22-25 cm (KIT-00-11383)
 - 26-28 cm (KIT-00-11384)
 - 29-31 cm (KIT-00-11385)

Note: Spectra socks and heel bumpers are included in the delivery.



Build Height & Weight

Size (cm)	Height (mm)	Weight (g)
22-25	130	520
26-28	140	655
29-31	152	780

Product weight includes foot shell. Measurements are approximate and will vary due to category selection and manufacturing variability.

Stiffness Category Selection

Impact Level		Weight (kg)
Low	Normal	
1	2	45-55
2	3	56-66
3	4	67-80
4	5	81-96
5	6	97-114
6		115-136

Complete Prosthetic Foot (incl. foot shell) Part Number

VS1-00-0 A -M -3

Category 1-6 Size 22-31 Side L-left R-right Skin Tone L-light M-medium D-dark

Foot Module Part Number

VS1-00-0 A -RU

Category 1-6 Size 22-31

Foot Shell Part Number

FTC- - 4-R

Generation 2-3 Profile M-mid H-high Cap 0-yes 1-no Size 22-31 Skin Tone L-light M-medium D-dark Side L-left R-right

See the Cosmetic Foot Shell page for more detailed ordering instructions.

